

LG-915-P24-70-1.0-0.8-DC24-Air



Product Features:

- Easy to use
- Reliable
- Uniform illumination

Applications:

- Object illumination
- Measurement
- Research

Specifications

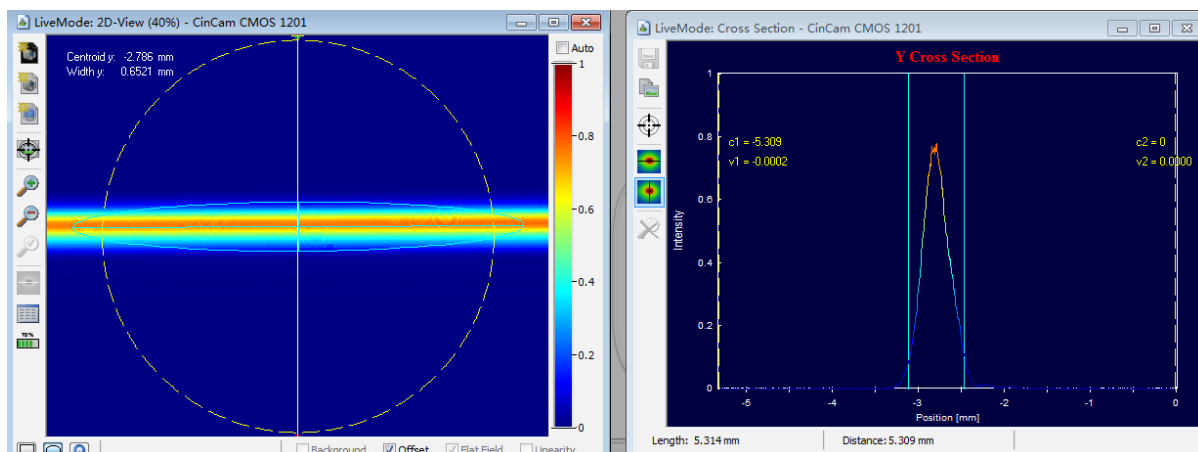
Optical	
Output Power, W	24, pulse
Central Wavelength, nm	915
Wavelength Tolerance, nm	± 10
Fan Angle, degree	70°
Line Width, mm	0.8@1.0m
Electrical	
Input Power Voltage, V	DC 24
Frequency Range, KHz	0~15
Power Consumption , W	≤ 25
Pulse Width, us	Self-adaptive
Minimum Pulse Width, us	5
Rising Edge, us	< 3
Falling Edge, us	< 2
Others	
Working Temperature, °C	-40~50
Storage Temperature, °C	-60~70
Ambient Humidity, %RH	≤ 80
Cooling	Air
Outer Dimension, mm	137×106×87
Power Dimension, mm	206×145×68
Weight, Kg	2.4

LG-915-P24-70-1.0-0.8-DC24-Air

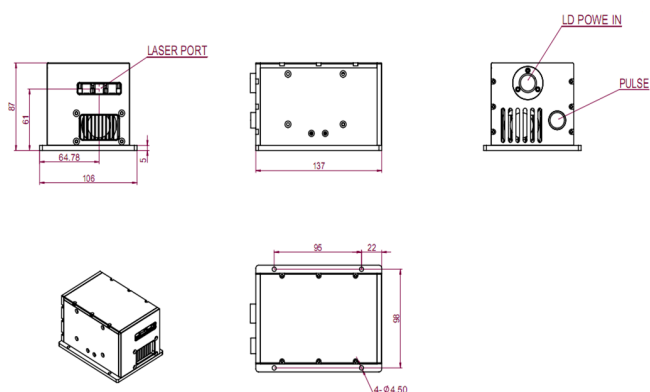
Shape Of Laser Beam



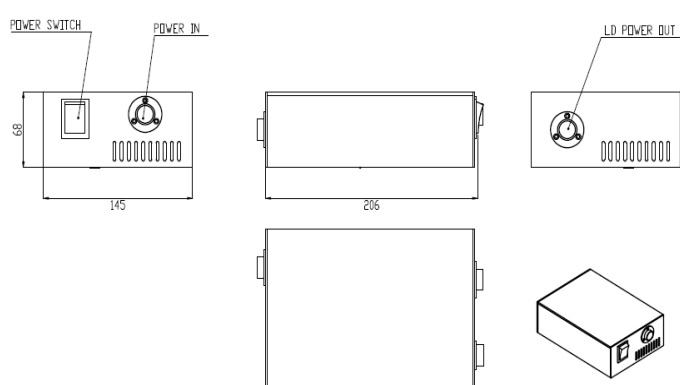
Laser Beam Width



Outer Dimension (mm)



Power Dimension (mm)



CAUTION:

- The product must not be heavily pressed, hard shocked and water soaked in transportation, storage and assembly in order to avoid the product from damaging.
- Do not expose eye and skin directly to laser radiation.
- Use the product at defined current and power.
- Working environment must be well ventilated.