

# LG-808-CW5-35-0.2-0.5-DC24-Air



## Product Features:

- Easy to use
- Reliable
- Uniform laser beam

## Applications:

- Object illumination
- Measurement
- Research

## Specifications

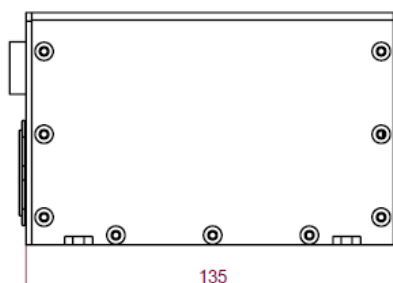
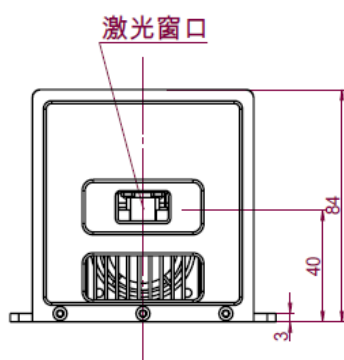
Optical	
Output Power, W	5, CW
Central Wavelength, nm	808
Wavelength Tolerance, nm	±10
Fan Angle, degree	35
Line Width, mm	0.5@20cm
Electrical	
Input Power Voltage, V	DC 24
DB9 Connector	
1(red)	DC 24V
2(black)	GND
3(green)	PULSE + (2.5~10V)
4(blue)	PULSE GND
Others	
Working Temperature, °C	-40~50
Storage Temperature, °C	-60~70
Ambient Humidity, %RH	≤80
Cooling	Air
Dimension, mm	135×96×84

# LG-808-CW5-35-0.2-0.5-DC24-Air

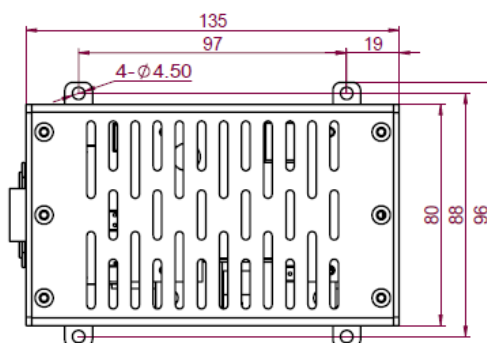
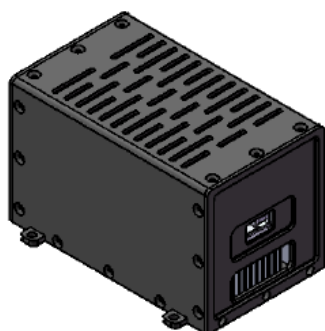
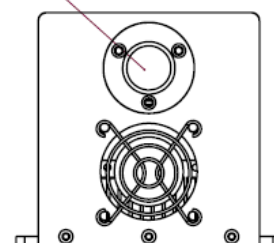
## Shape Of Laser Beam



## Dimension (mm)



LD 电源输入: 1/2  
激光触发: 3/4



### CAUTION:

- The product must not be heavily pressed, hard shocked and water soaked in transportation, storage and assembly in order to avoid the product from damaging.
- Do not expose eye and skin directly to laser radiation.
- Use the product at defined current and power.
- Working environment must be well ventilated.